



[www.salda.lt](http://www.salda.lt)

# *AmberAir*



TOP CLASS  
MODEL BOX - SD50+  
D1 • L1 • F9 • T2 • TB2



WIDE RANGE  
AIR FLOW  
80 000 m<sup>3</sup> / h



ADD-INS TOOL  
AUTODESK REVIT  
3D MODELING



RR coils



Rotary



Counter-flow



Cross-flow



## AmberAir – GEMSTONE IN AHU MARKET!

SALDA UAB has dedicated over 30 years to the research, development, production, and training of employees to create their signature product: the Eurovent certified series of modular Air Handling Units, AmberAir. These units offer unparalleled flexibility in air handling solutions, utilizing a 3D selection program to customize solutions from a virtually limitless range of components. These customized designs can then be seamlessly integrated into technical plans using Autodesk Revit or dxf formats.

Our Air Handling Units are crafted using components from leading European manufacturers ensuring both durability and low operating cost.

Additionally, we offer one of the market's best casings, renowned for its exceptional mechanical strength, air tightness, thermal resistance, and minimal thermal bridging. Each year, we introduce innovations that include specialized solutions, more efficient components, and expanded selection options.

Our continuous innovation and dedication to quality have earned us the distinction of producing the world's first Eurovent hygienic Air Handling Unit, delivering healthy air to public buildings globally.

## WHY IS IT WORTH CHOOSING **AmberAir**?

### The largest selection:

- Supply air-flows – from 700 to 80,000 m<sup>3</sup> / h
- 4 casing types
- 5 heat recovery systems – counter-flow, cross-flow, rotary heat exchangers, run around coils
- Specialized units – AmberAir Hygienic, AmberAir Coastal.

### Quality and reliability:

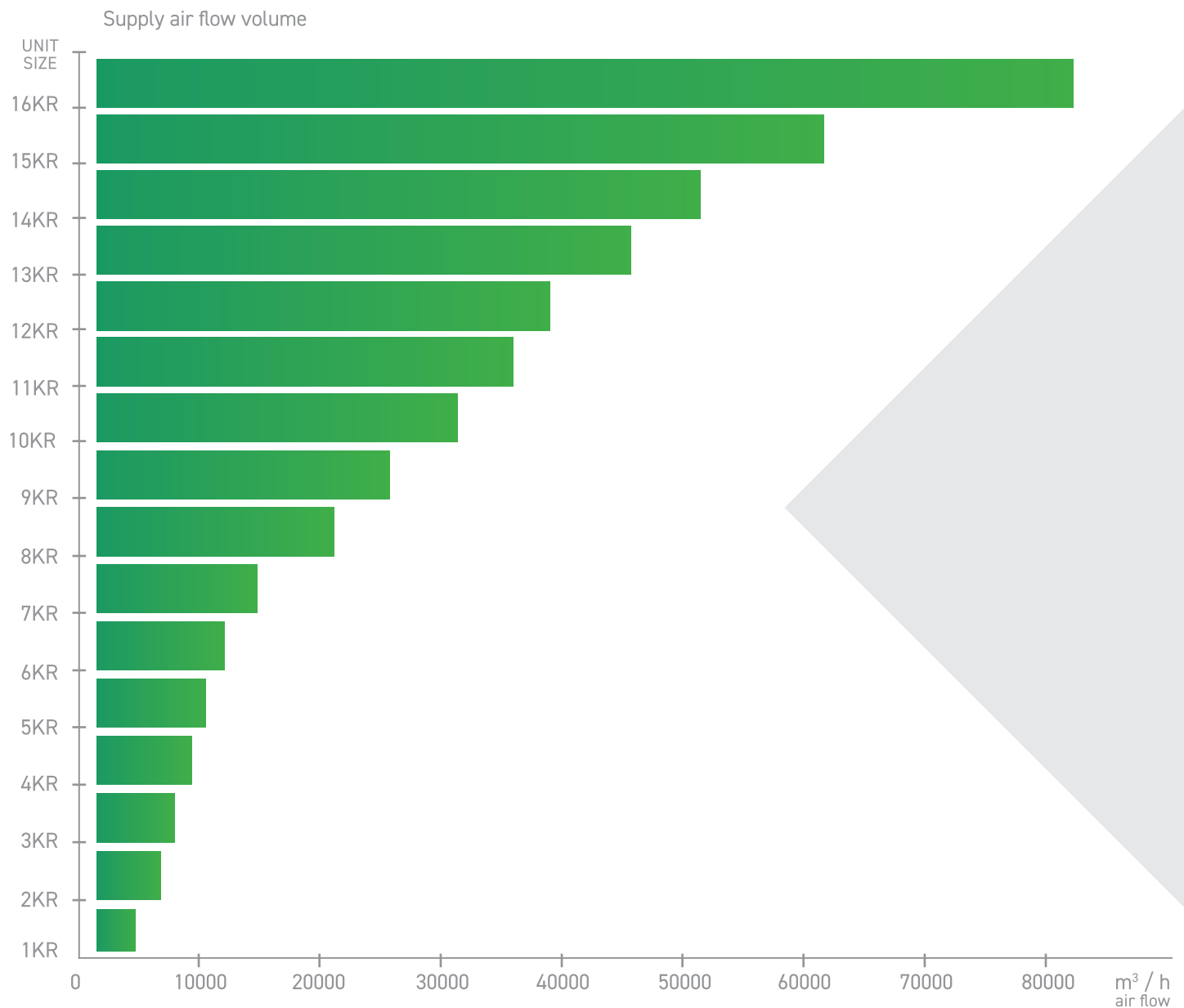
- Components – only from the leading European manufacturers
- SD50+ Model box properties L1, D1, T2, TB2, F9
- Certified by Eurovent Certita Certification

### User friendly (from designing to installation and maintenance):

- 3D Air Handling Unit selection program, possibility to Export to Autodesk Revit or .dxf and LCC calculator
- The unit sections are easily connectable on installation site
- All components are easily removable if replacement or maintenance is necessary

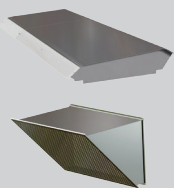


## WIDE RANGE OF **AmberAir** SIZES FOR YOUR PROJECTS





## OUTDOOR INSTALLATION

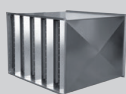


- Roof
- Hood with net
- Outdoor grilles

## INTERNAL PANELS:

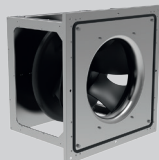
- Galvanized steel <
- Aluzinc AZ185 <
- Stainless steel AISI 304 <

## SILENCER



- With casing /duct mounted silencers
- Hygienic by design
- Washable fiberglass
- Sizes: 600, 900, 1200
- Gap sizes: 50, 100 mm

## FANS



- EC**
  - Direct drive centrifugal
  - IE5 class motor
  - High efficiency
- AC**
  - Direct drive centrifugal
  - IE3 class motor
- ATEX**
  - Fans for explosive environments

## DAMPER

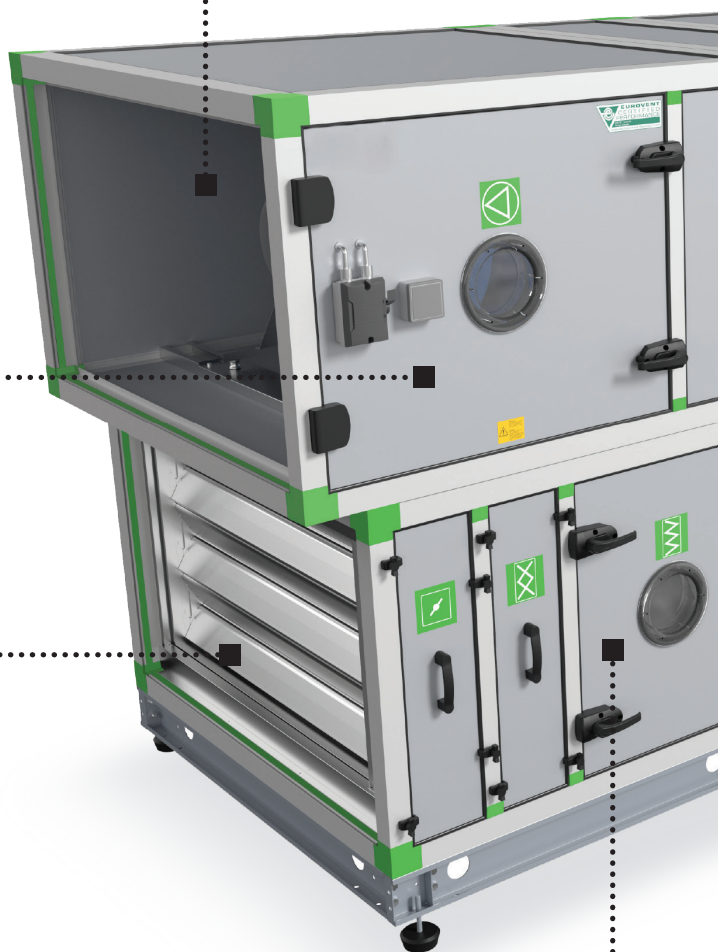


- With casing /duct mounted dampers
- Aluminium blades
- Damper leakage class: 2/4

## FILTER



- Activated carbon cartridge
- Panel (prefilter)
- Pocket
- HEPA/EPA
- Grease





## HEAT EXCHANGER

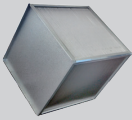


### Rotary

- Efficiency – up to 87%

### Cross-flow plate

- Efficiency – up to 75%



### Counter-flow plate

- Efficiency – up to 95%

### Run around coils

- Heat recovery rate up to 80%

## CONSTRUCTION

### INSPECTION WINDOW

- Lightning inside available
- Easy visual inspections

### JOINT BRACKETS & HINGES

- Supreme air-tightness
- Low thermal losses
- Perfect adjusting section to each other
- Easy mounting
- Extremely strong and reliable

### LOCKS AND ERGONOMIC HANDLES

- Prevention from accident opening with lock
- Easy and safe maintenance

## HUMIDIFIER

### Steam

- No water treatment required
- Very reliable operation

### Evaporative

- Water supply is controlled by a built-in solenoid valve

## BASE

### Base frame

- Rigid frame for lifting the unit
- 120 / 240 mm height options

### Adjustable legs

- Leveling the unit on site
- Antivibration
- Possibility to install AHU on sloped surface

## HEATER / COOLER

### Heater

- Water / Steam
- Electric
- Gas

### Cooler

- Water cooler
- DX cooler

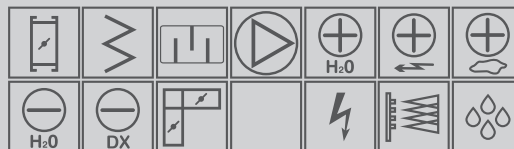
## SMART control equipment

- Indoor/outdoor installation options
- Plug-and-play
- Powerful MCB, Regin or Siemens control systems
- Positioning: in section, on the doors, mounted in distance

## Types of Modular Air Handling Units

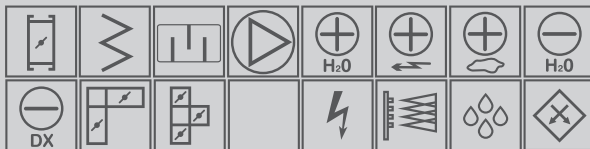
An Air Handling Unit (AHU) is composed of appropriately sized and functional modules, tailored to the specific airflow and pressure requirements. The AmberAir R/C/CX/N/RR series can supply and/or exhaust air in various directions, depending on the configuration. These units have the capability of heating, cooling and air filtration, optimizing energy efficiency and heat recovery. The air handling process can be managed by a single integrated unit or configured using multiple modules, based on the size and specific needs of the installation.

### AmberAir N

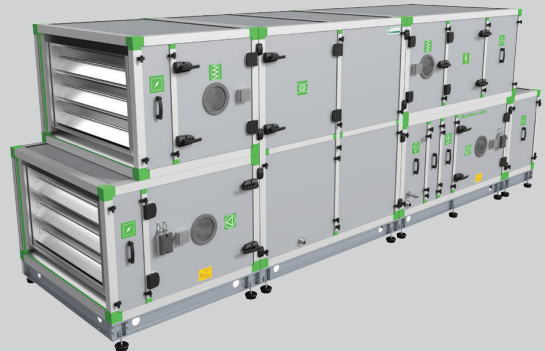


Air supply unit, intended for supply of fresh air into premises. The unit may consist of fan, heater (water, electric, gas or steam), cooler (water or DX), humidifier (steam or evaporative), filters, recirculation, silencer, control sections, also service section and damper can be added.

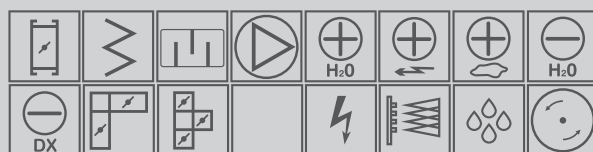
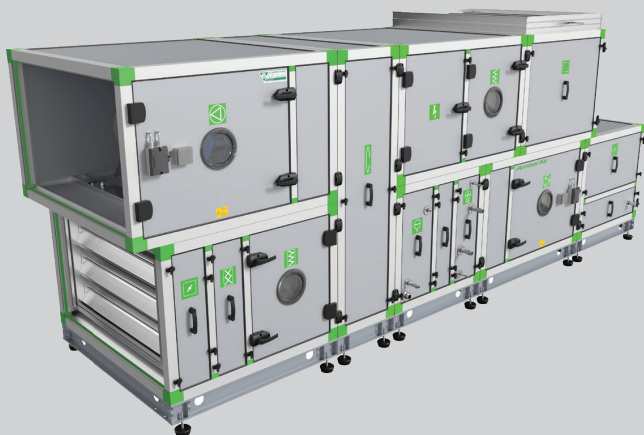
### AmberAir C



Heat recovery unit with plate cross-flow heat exchanger. The unit may consist of fans, heater (water, electric, gas or steam), cooler (water or DX), humidifier (steam or evaporative), filters, recirculation, silencer, control sections, also service section and damper can be added.



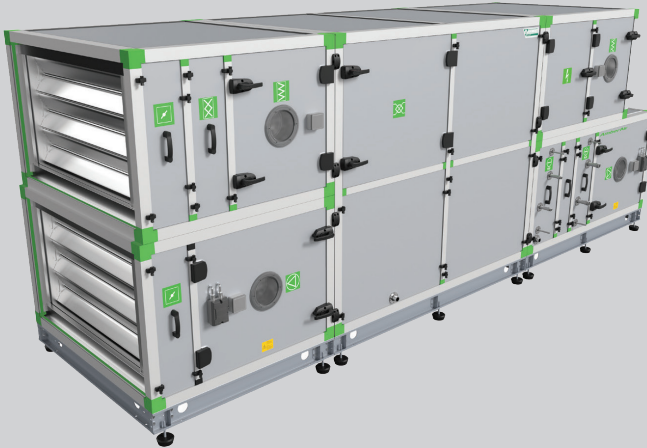
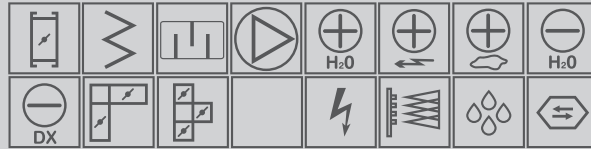
### AmberAir R



Heat recovery unit with rotary heat exchanger. The unit may consist of fans, heater (water, electric, gas or steam), cooler (water or DX), humidifier (steam or evaporative), filters, recirculation, silencer, control sections, also service section and damper can be added.

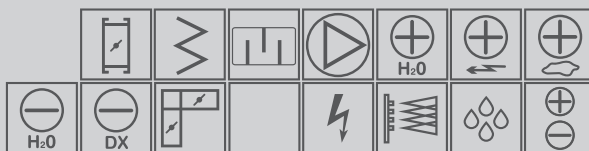
## Types of Modular Air Handling Units

### AmberAir CX <

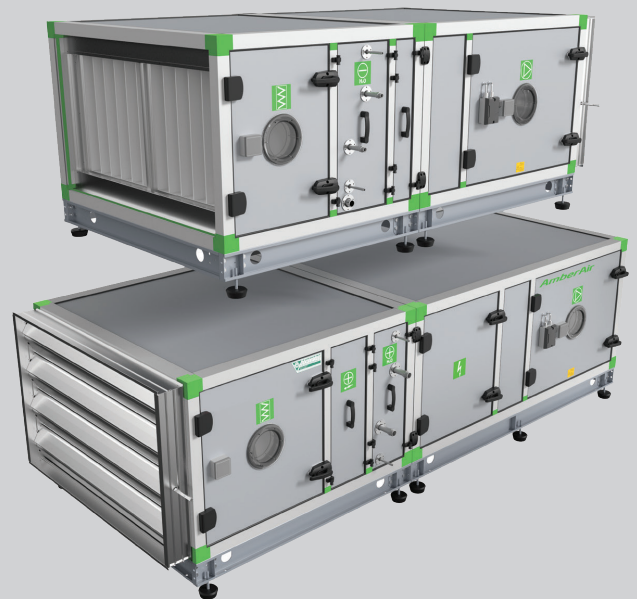


Heat recovery unit with plate counter-flow heat exchanger. The unit may consist of fans, heater (water, electric, gas or steam), cooler (water or DX), humidifier (steam or evaporative), filters, recirculation, silencer, control sections, also service section and damper can be added.

### > AmberAir RR



Heat recovery unit with heat recovery coils. The unit may consist of fans, heater (water, electric, gas or steam), cooler (water or DX), humidifier (steam or evaporative), filters, recirculation, silencer, control sections, also service section and damper can be added.





## Specialized Units

### AmberAir HYGIENIC

The Salda AmberAir Hygienic units have been developed, tested, and approved in accordance with Eurovent Certita Certification standard for Hygienic Air Handling Units. In today's world, maintaining hygiene is crucial not only for hospitals but also for public buildings. This new unit meets the increasing demand for clean and healthy air across various everyday environments. The reliability and serviceability of these units surpass the stringent requirements of the VDI 6022 standard.

### WHY AmberAir Hygienic?

- Top class SD50+ casing: exceeds Eurovent requirements
- Wide range of options: airflow from 700 up to 80,000 m<sup>3</sup> with multiple component variations
- Antimicrobial: all non-metallic parts inside the unit (sealants, gaskets, filters, etc.) have been tested according to the EN ISO 846 standard to prove the impossibility for bacterial growth
- Anticorrosive: all metallic materials inside the unit (panels, rails, holding constructions and components itself) comply with corrosion class C3 according to EN ISO 12944-2, and the drip trays are made from stainless steel EN 1.4301 (AISI 304)
- Maintenance friendly: quickly accessible or easy removable components to ensure proper cleaning

### DESIGNED TO SUPPLY CLEAN, HEALTHY AIR:



Educational buildings



Offices



Retailers



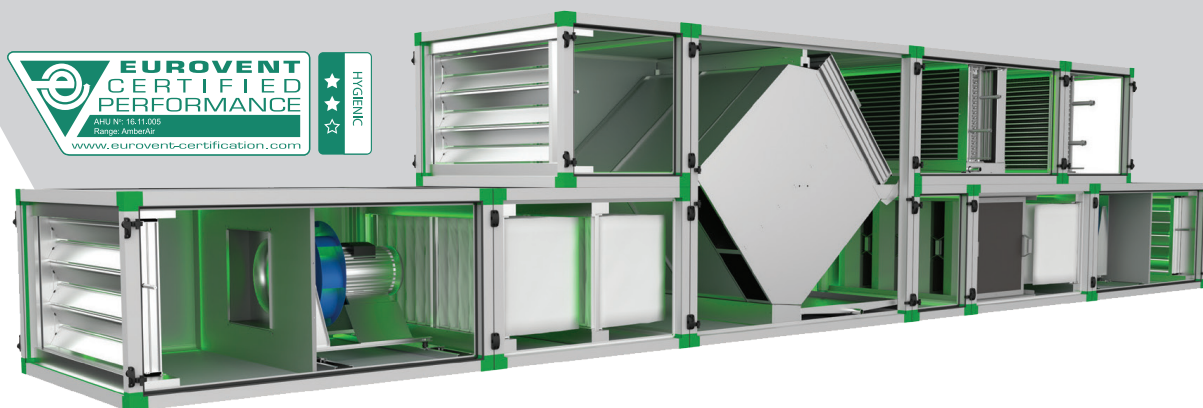
Hotels



Hospitals

### ECP hygienic Air Handling units: MORE RELIABLE THAN THE VDI 6022:

- Detailed specifications
- Annual audits
- Specific requirements for selection software



Coastal regions face a heightened risk of corrosion. To address this, SALDA has developed the AmberAir series of modular air handling units specifically designed for these challenging environments. The following design modifications have been implemented to enhance corrosion resistance.

### Air handling unit designed for coastal regions

- Casing profile is made of anodised aluminium
- Internal and external metal surfaces meet the requirements of corrosion category C4 (EN ISO 12944-2)
- Fins of water and DX heating /cooling elements and heat exchangers are covered with epoxy coating



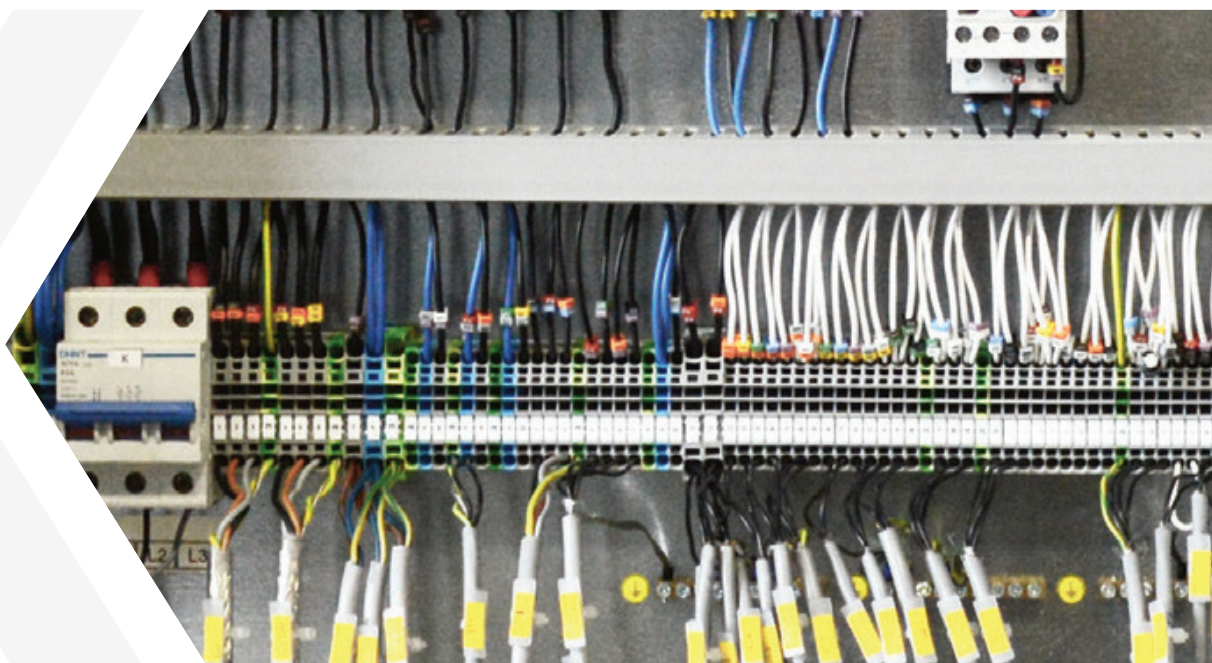
## AmberAir Control

Control equipment for AmberAir units can be customized to meet each client's specific needs. These units are factory-configured and tested, complete with all necessary field components. The control system adheres to EU directives (MD, EMC, and LVD) and is CE-marked.

AmberAir is an ideal solution for both small installations requiring straightforward control functions and large installations with complex data communication needs. These units are self-contained, eliminating the need for extensive on-site electrical installation. The control equipment is ready to operate immediately upon installation (plug-and-play). The control unit can be integrated into the unit, built into its doors, or mounted at a specific distance if required. Siemens, Regin, or MCB control systems are available.

### AmberAir control features:

- Indoor/outdoor operation capabilities (up to IP65)
- PC control via Modbus (RS485); TCP/IP; BACNet MSTP; BACNet IP; Web
- Air quality control: CO<sub>2</sub>, humidity, constant pressure
- Plug and play – all components connected and tested







## Smart selection software for modular air handling units



### VentMaster v5

**Using VentMaster makes selection of AmberAir quick and user-friendly:**

- Simulation in a 3D environment
- Price calculation and placing of orders directly (for registered users only)
- Exporting a drawing to a .dxf format
- Exporting a drawing and technical data to Autodesk Revit
- LCC calculation.

**Choose an optimal option by using the LCC (operating costs) calculation program, which estimates costs to be incurred within the course of operation of the air handling unit by evaluating:**

- The initial investment
- Fan power consumption
- Heating equipment power consumption, fuel or hot water consumption

Using only reliable components and modern equipment for assembling the products enables us to guarantee an exceptional operation period thereof. All SALDA air handling units are provided with a 2-year warranty.



**2 year  
warranty**

All Products come with a  
standard 2 year warranty.  
Optional up to 5 years

Scan QR  
to see products

